

Image 1



Image 3

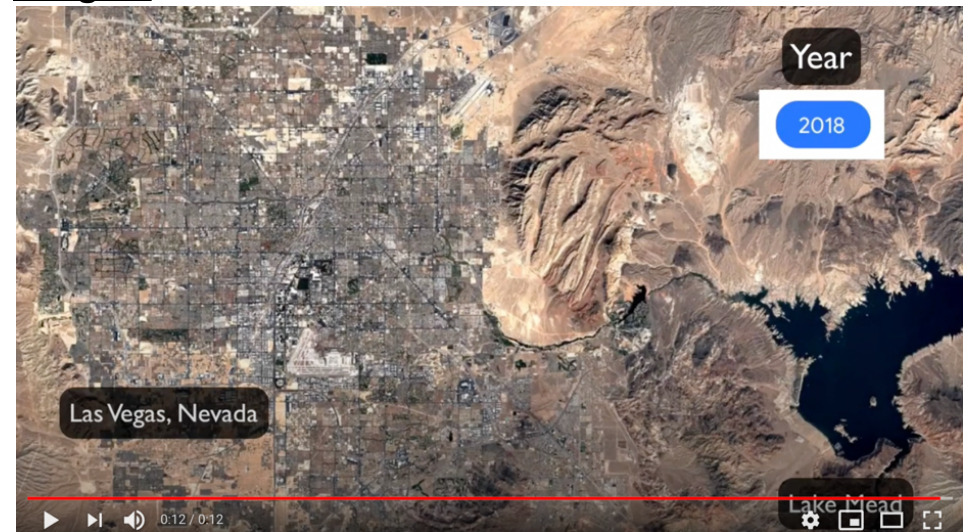


Image 2

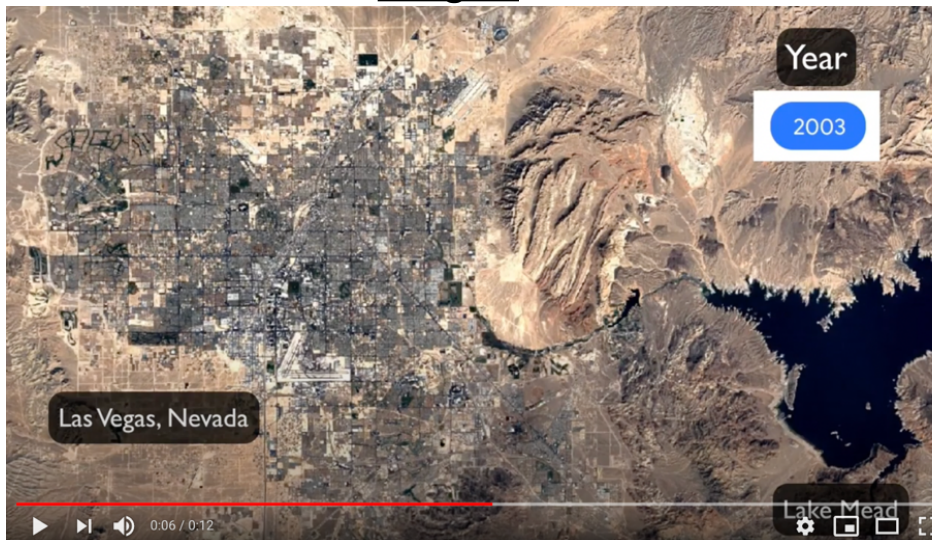
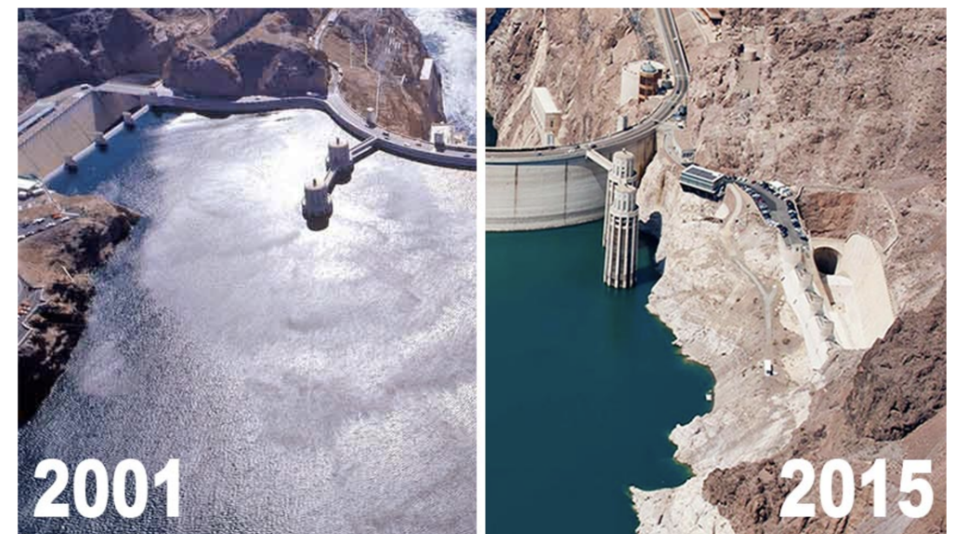


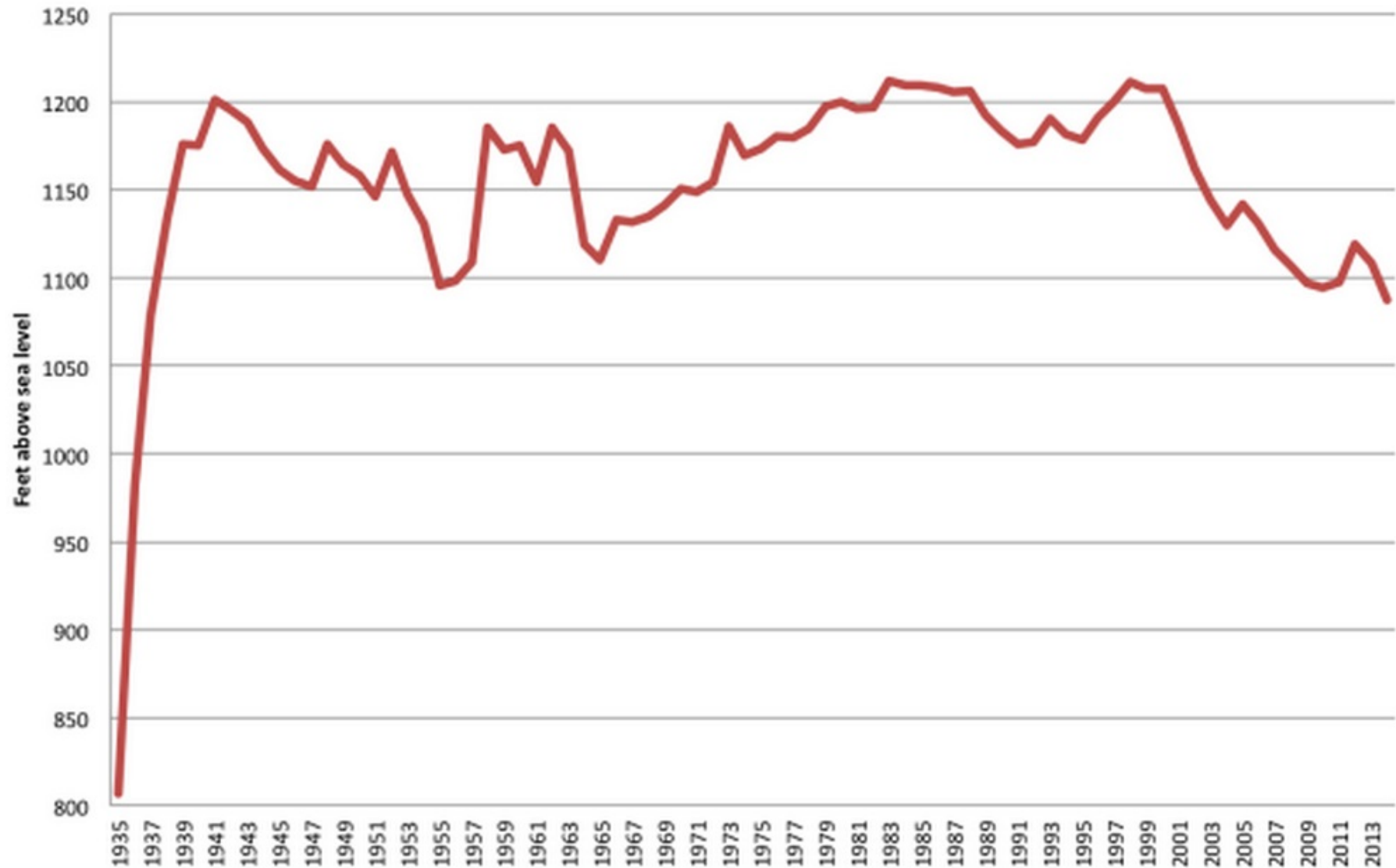
Image 4



Lake Mead water surface elevation has dropped over 143 feet.

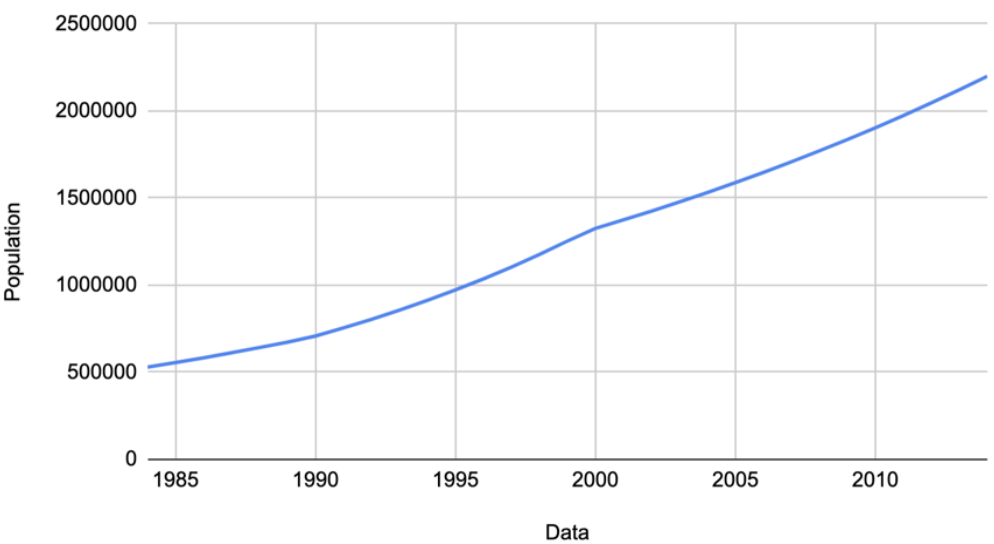
Graph 1

**Lake Mead water level at Hoover Dam
(Annual measurements as of June 1st)**



Graph 2

Las Vegas Population (1984-2014)



Graph 3

Las Vegas Water Consumption (1984-2014)

